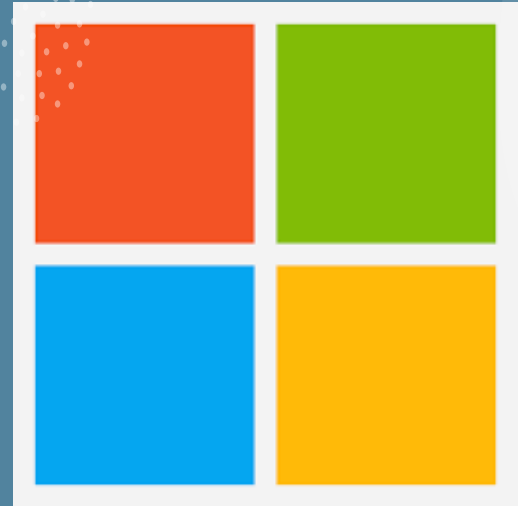


# Microsoft GIVE Campaign

**Dr. Shawna McBride**

**National Space Grant  
Foundation, Chair**



**NATIONAL  
SPACE GRANT  
FOUNDATION**

# National Space Grant Foundation

## Foundation



Kevin Freese, CEO



Shirley Campbell,  
Assistant Director



Mark Fischer



Talia Jurgens



Caitlin Milera,  
Social Media

## Board of Directors



Shawna McBride (WY),  
Chair



Jaydeep Mukherjee (FL),  
Vice Chair



Kevin Crosby (WI),  
Treasurer



Andy Arena (OK)



Gerardo Morell (PR)



Joe Orr (UT)



Tim Urban (UT)

## Ex Officio Members



Scott Tarry (NE),  
ExComm Chair



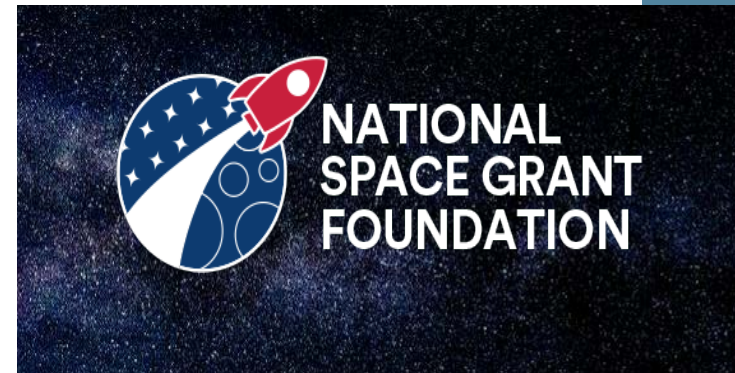
Dale Thomas (AL),  
Alliance Chair



**NATIONAL  
SPACE GRANT  
FOUNDATION**

# National Space Grant Foundation

- Primary goals
  - Provide **support services** to the Space Grants
  - Provide long-term **funding** for Space Grants
  - Serve as the **National Face** for Space Grant programs



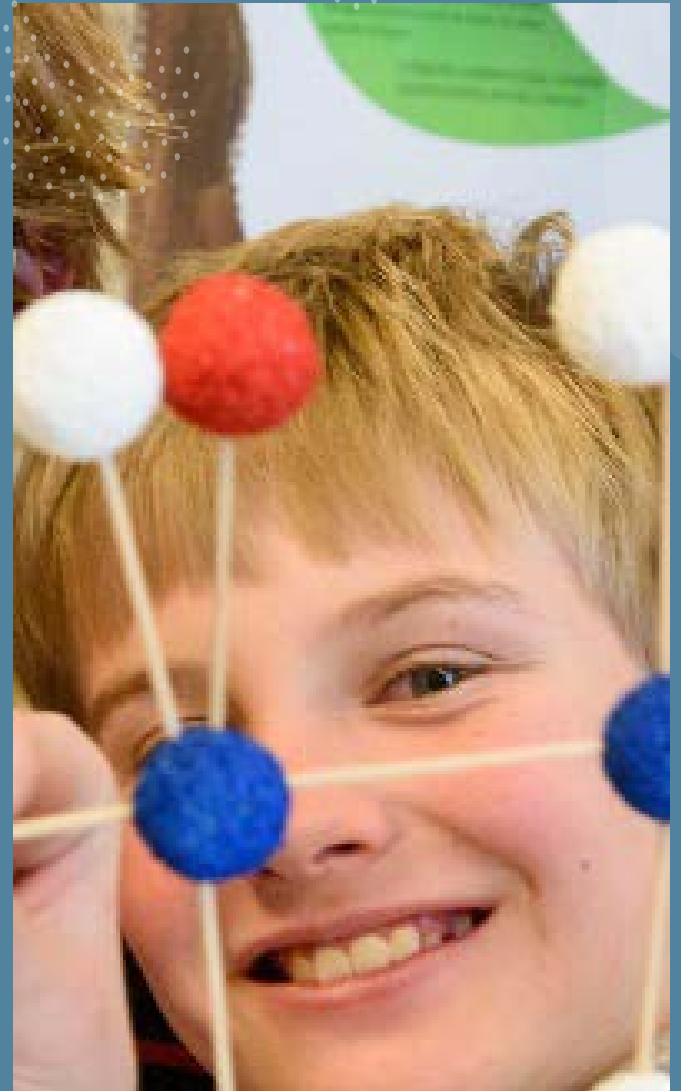
# National Space Grant Foundation

- Provide **support services** to Space Grants
  - Support for meetings and events
  - Facilitate award funding (fellowships, scholarships, stipends)
  - Purchases and payments
    - Process payments, including credit card payments
    - Accept payments and donations
    - Receive affiliate dues
    - Invoice vendors
    - Assist with purchasing difficult items: promotional items and office equipment
    - Provide staff bonuses
    - Help with problem-solving
    - Serve as an interface between Space Grants and outside organizations



# National Space Grant Foundation

- Provide long-term **funding** for Space Grants
  - Fundraising and donations
- You can use these funds in ways you can't use NASA funds
  - Alliance dues, staff incentives, swag
  - Non-US citizen student participation
  - Support for students and faculty



# What is Microsoft GIVE?

## Microsoft employee giving program

To support our employees' passion for giving, Microsoft matches employee donations of time and money to nonprofit organizations. Each October, our fun and spirited employee Giving Campaign—a tradition since 1983—makes a significant annual impact in addition to generous giving year-round.

[Maximize employee engagement \(PDF\) >](#)



## Employee giving by the numbers

In fiscal year 2022, US employees rallied together to provide:

# \$255M

# 720K+

Our employees donated \$255 million (inclusive of company match) to over 32,000 nonprofits

Over 29,000 Microsoft employees volunteered more than 720,000 hours

# Microsoft GIVE connection

Marcello Benati  
Chief Architect



# Fall 2022 Results: Auction Items

Auction Item/Experience	Winning Bid
Private Stargazing Program with Wyoming Stargazing	\$820.01
Zoom Call with Emily Calandrelli aka The Space Gal, host of Emily's Wonder Lab	\$403.00
Your Choice of Astrophotography Print from Wyoming Stargazing	\$375.00
Behind the Scenes Tour at the Green Bank Observatory	\$699.00
An Afternoon with Jacki Klancher: Scientist, Teacher, and Explorer	\$650.01
An Afternoon with Jacki Klancher: Scientist, Teacher, and Explorer	\$650.01
An Evening Guided Tour of the Wyoming Infrared Observatory (WIRO) including dinner and stargazing with Dr. Chip Kobulnicky	\$2,500.00
An Evening Guided Tour of the Wyoming Infrared Observatory (WIRO) including dinner and stargazing with Dr. Chip Kobulnicky	\$2,500.00
<b>Sub-Total</b>	<b>\$8,597.03</b>
<b>Microsoft Match</b>	<b>\$8,597.03</b>
<b>Total</b>	<b>\$17,194.06</b>





# WY Auctions Items completed

- A tour of the Wyoming Infrared Observatory (WIRO) including dinner with Dr. Mike Brotherton
- Camping with Jacki Klancher: Scientist, Teacher, and Explorer
- *Private Stargazing Program with Wyoming Stargazing – Rained Out!*



# WY Auctions Items completed





## Fall 2022 Auction Items



- Astrophotography print from Wyoming Stargazing
- Private Stargazing Program with Wyoming Stargazing
- Zoom call with Emily Calandrelli - aka The Space Gal





**How can you  
participate in  
Microsoft GIVE?**

# Ways to participate

- Submit information for
  - Causes
  - Auction Items
- Look for e-mails from Kevin and Shirley
  - Templates
  - Examples
  - \*Info due mid-July\*

# Example of Causes

- Great Lunar Expedition for Everyone (GLEE)
  - Student stipends and technical support
- National Eclipse Ballooning Project (NEBP)
  - Travel funding and streaming support
- Science Kitchen Outreach Lab
  - Funding for supplies



# Causes Template

- Title
- Pictures
- Description
- Request
  - Funding (\$500-\$2,500 increments)
  - Resources (hardware, software, website development, technical assistance)
- Point of Contact



# Examples of Auction Items

- Stargazing with Wyoming Stargazing
- Astrophotography print from Wyoming Stargazing
- Zoom call with Emily Calandrelli





# Auction Items Template

- Title
- Pictures
- Description
  - What type of event is it
  - How is it unique
  - Location of the event
  - Who is involved
- Minimum Bid/Fees
- Point of Contact

# Ideas for Auction Items

- Tour of a scientific/engineering facility
- Lunch or dinner with a scientist, educator, or astronaut
- Connect with Affiliate institutions
  - Science Center or Museum
  - Planetarium
  - Observatory



# Example of a Combo Approach

- **The Embedded Teacher Program** *onboard the ZERO-G aircraft*
- Cause: \$6,000 teacher sponsorship
- Auction Item: \$10,000 – sponsor flies with the teacher on the parabolic flight



# What is your responsibility and time commitment?



Generate ideas and submit information



Serve as Point of Contact for Causes and Auction Items



Facilitate connections



Participate as needed and desired

# How is funding distributed?

## Auction Items

- 80% of funding goes to the Space Grant submitting the item
- 20% of funding goes to the National Space Grant Foundation
- After event is completed

## Causes

- Specific Causes: 80% Space Grant/20% National Space Grant Foundation
- General Causes: 80% split between all Space Grants/20% NSGF

# Improvements in the works

Getting  
information to  
Microsoft earlier

Minimum bids/fees

Better  
communication

# For more information please contact:

- Kevin Freese: [kdfreese@aol.com](mailto:kdfreese@aol.com), cell: 440-477-7937
- Shirley Campbell: [campbell@spacegrant.org](mailto:campbell@spacegrant.org)
- Shawna McBride: [smcbride@uwyo.edu](mailto:smcbride@uwyo.edu)

Thanks all!

Questions?



Have a great summer!