



**LaACES
Student
Ballooning
Course**

L24.02b ProjectLibre Example



LaACES
Student
Ballooning
Course

Open Source Alternative to MS Project

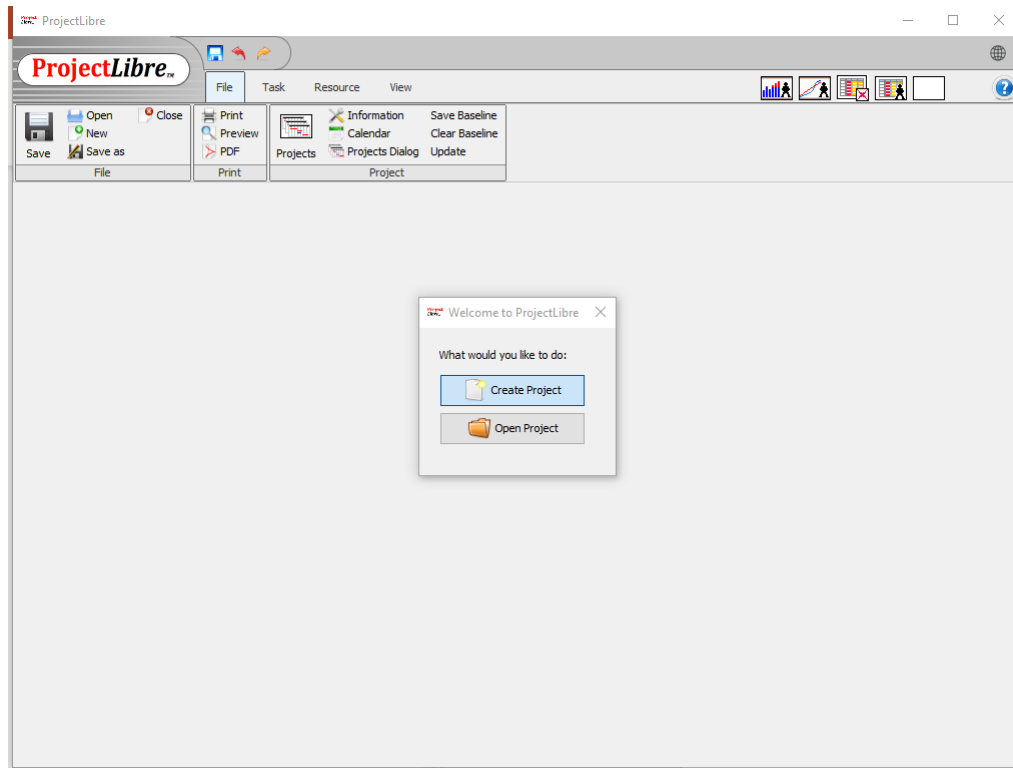
- MS Project is not part of the standard Office Suite
- Free Alternatives are available but vary widely in quality and capabilities
- The best alternative that LaACES have discovered is the open-source software ProjectLibre
- Installer available via the download link here
<https://www.projectlibre.com/>
- Will send you to a SourceForge page to download



**LaACES
Student
Ballooning
Course**

New Project

- On starting LibreProject a dialog box asking we want to open an existing project or create a new project
- Select create new project





Basic Project Information

- Next we will get a dialog box for basic project info like project name, who the project manager is, and the start date for the project
- Note the forward scheduled box indicates we are scheduling forward from a start date, we could uncheck that to schedule backwards from a completion date

ProjectLibre New Project

Project Name: LaACES Sample Project

Manager: Project Manager

Start Date: 2/1/21 Forward scheduled

Notes:

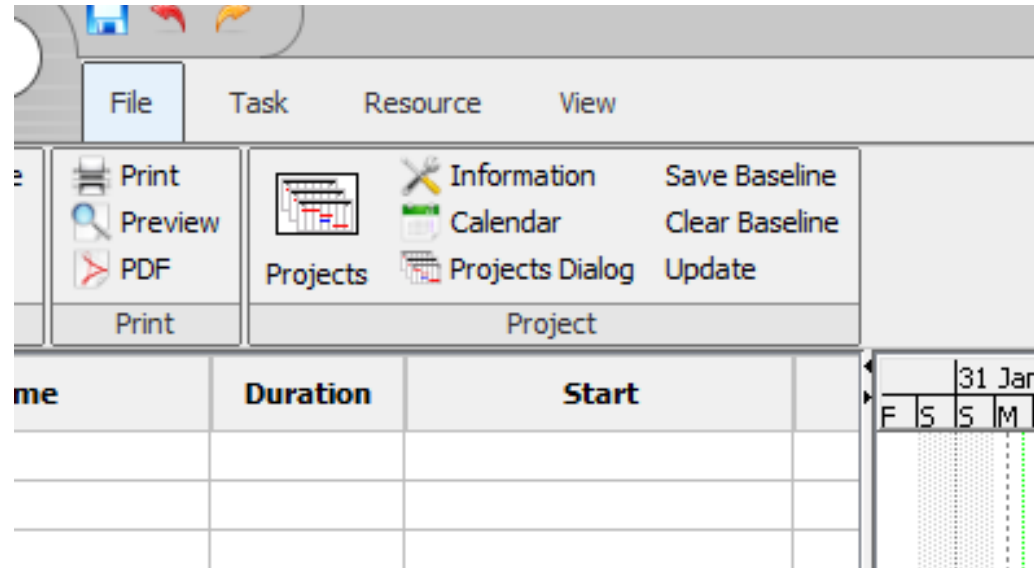
OK Cancel Help



Setting the Working Hours

- Before we schedule any tasks we want to change the working hours for the project
- Otherwise, will assume everyone is able to work standard 8 hour days
- We want to schedule tasks based on realistic working hours

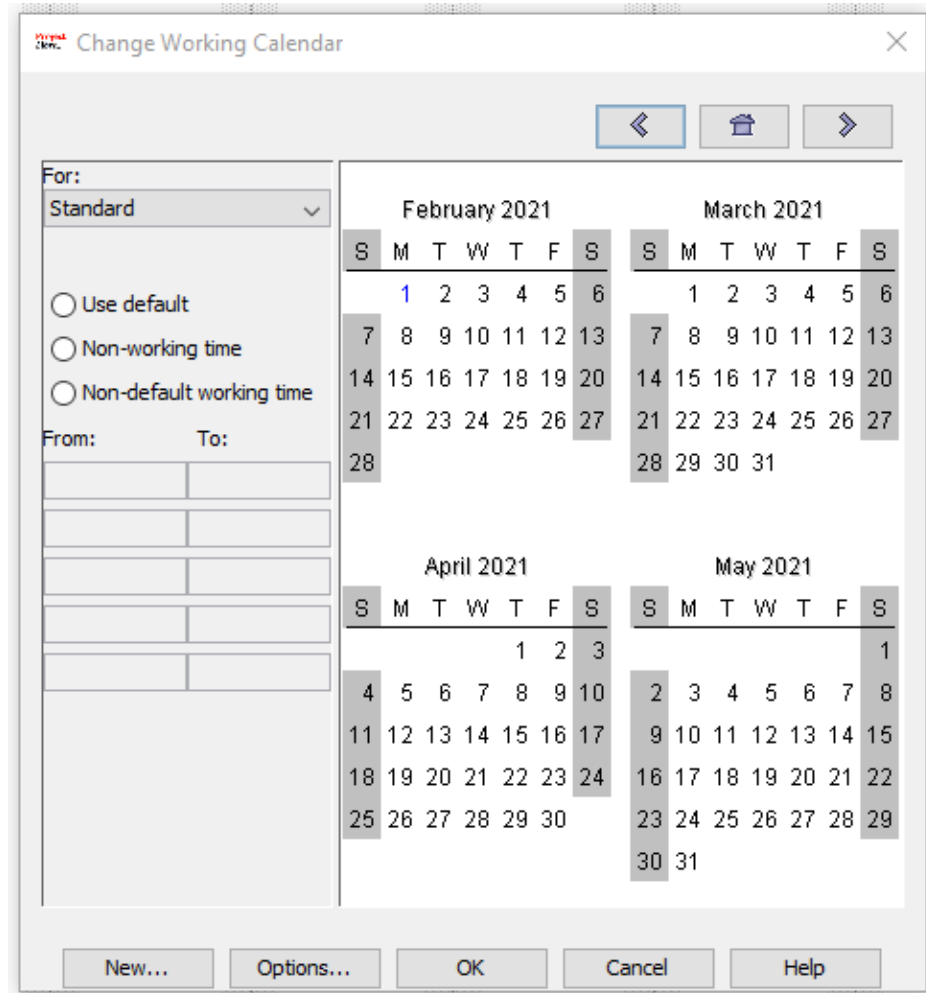
Hit the calendar button inside the project box when the file tab is selected from the menu





Setting the Working Hours (2)

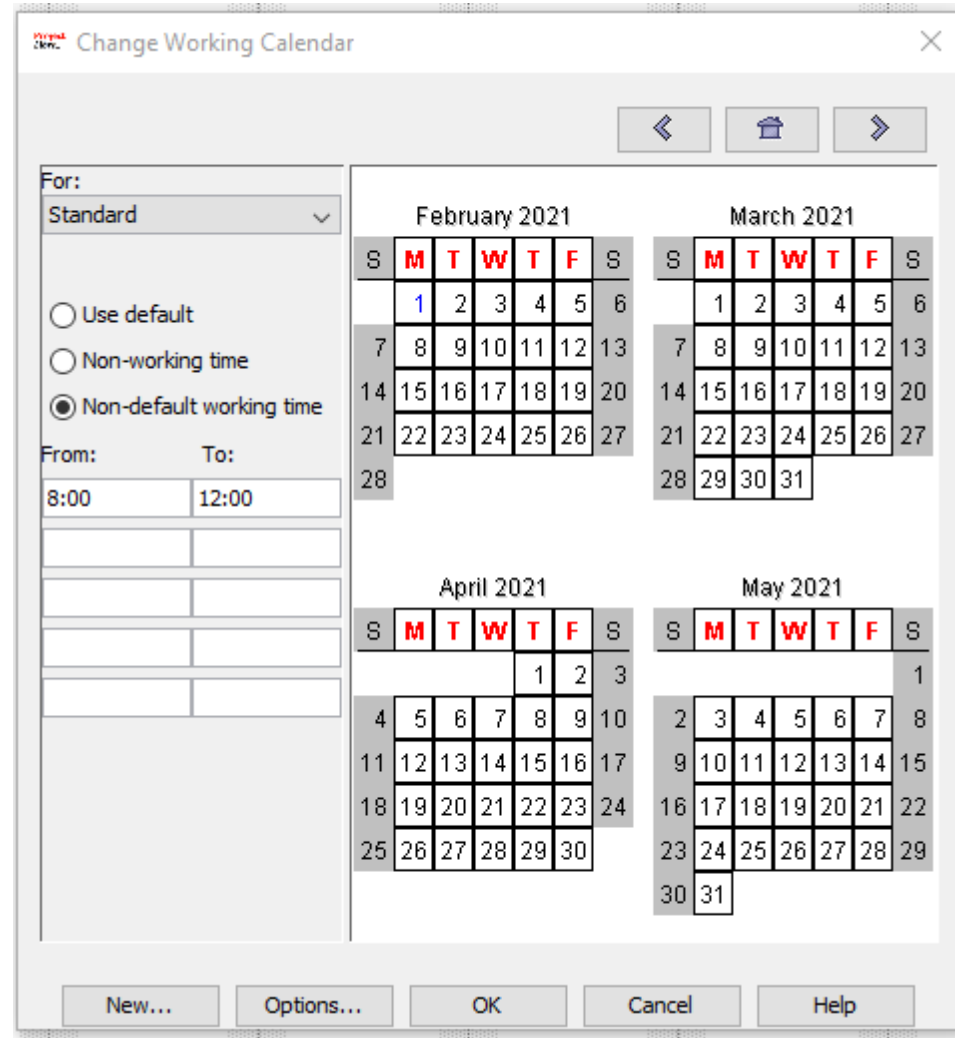
- This will bring up a window allowing us to change the working time on calendar
- While we could set specific times or days off for now we just want set the working time to a more realistic 20 hours (hours a day)
- With the standard calendar selected from the drop down select MTWTF by shift clicking on all the days





Setting the Working Hours (3)

- Next click the “Non-default working time” option to allow us to change the time
- In the time field we could select specific working hours but all we really care about is having a 4 hour workday
- So delete the afternoon 13:00 to 17:00 blocks, then click ok
- Afterwards reopen the calendar and click on the days to be sure that change was applied
- Now tasks will be scheduled assuming 4 hours of work is what can be accomplished in a day





Insert Rows

- Select the row above which you want to insert a subunit
- Select “Insert” from the “Task” section of the Task menu tab
- To delete a row, select the row and select “Delete” from the same menu section

ID	Name	Duration	Start	Finish	Pred
1	Power System	1 day?	2/1/21 8:00 AM	2/2/21 12:00 PM	
2	Flight Control Unit	1 day?	2/1/21 8:00 AM	2/2/21 12:00 PM	
3	Data Archive Unit	1 day?	2/1/21 8:00 AM	2/2/21 12:00 PM	
4	Data Archive Disc	1 day?	2/1/21 8:00 AM	2/2/21 12:00 PM	
5	Auxiliary Transmitter	1 day?	2/1/21 8:00 AM	2/2/21 12:00 PM	
6	Mechanical Structure	1 day?	2/1/21 8:00 AM	2/2/21 12:00 PM	
7	Thermal Control	1 day?	2/1/21 8:00 AM	2/2/21 12:00 PM	
8	System Integration and Test	1 day?	2/1/21 8:00 AM	2/2/21 12:00 PM	
9	Management	1 day?	2/1/21 8:00 AM	2/2/21 12:00 PM	



Enter the subunit task names

- Type in the name of the subunit task in the “Task Name” field
- Subunits are “indented” with the indent button with the right arrow next to the insert and delete buttons
- When subunits are so “indented” the major unit will become bold and the Gantt chart bar will change shape

LaACES Sample Project *

ProjectLibre™

File Task Resource View

Network Zoom In Copy Insert Indent Link Information Assign Resources Find
WBS Zoom Out Paste Cut Delete Outdent Unlink Calendar Save Baseline Scroll To Task
Task Usage Task Update

ID	Name	Duration	Start	Finish	Predecessors
1	Power System	1 day?	2/1/21 8:00 AM	2/2/21 12:00 PM	
2	Power Source	1 day?	2/1/21 8:00 AM	2/2/21 12:00 PM	
3	FCU Supply	1 day?	2/1/21 8:00 AM	2/2/21 12:00 PM	
4	DAU HD Supply	1 day?	2/1/21 8:00 AM	2/2/21 12:00 PM	
5	DAU Supply	1 day?	2/1/21 8:00 AM	2/2/21 12:00 PM	
6	CubeSat Supply	1 day?	2/1/21 8:00 AM	2/2/21 12:00 PM	
7	Integrate and Test	1 day?	2/1/21 8:00 AM	2/2/21 12:00 PM	
8	Flight Control Unit	1 day?	2/1/21 8:00 AM	2/2/21 12:00 PM	
9	Data Archive Unit	1 day?	2/1/21 8:00 AM	2/2/21 12:00 PM	
10	Data Archive Disc	1 day?	2/1/21 8:00 AM	2/2/21 12:00 PM	
11	Auxiliary Transmitter	1 day?	2/1/21 8:00 AM	2/2/21 12:00 PM	
12	Mechanical Structure	1 day?	2/1/21 8:00 AM	2/2/21 12:00 PM	
13	Thermal Control	1 day?	2/1/21 8:00 AM	2/2/21 12:00 PM	
14	System Integration and Test	1 day?	2/1/21 8:00 AM	2/2/21 12:00 PM	
15	Management	1 day?	2/1/21 8:00 AM	2/2/21 12:00 PM	



Complete entering WBS

- Repeat the process of inserting rows, typing in the task name and indenting the subunit continues until all tasks in the WBS are entered

	Name	Duration	Start	Finish
1	<input checked="" type="checkbox"/> Power System	1 day?	2/1/21 8:00 AM	2/2/21 12:00 PM
2	Power Source	1 day?	2/1/21 8:00 AM	2/2/21 12:00 PM
3	FCU Supply	1 day?	2/1/21 8:00 AM	2/2/21 12:00 PM
4	DAU HD Supply	1 day?	2/1/21 8:00 AM	2/2/21 12:00 PM
5	DAU Supply	1 day?	2/1/21 8:00 AM	2/2/21 12:00 PM
6	<input checked="" type="checkbox"/> CubeSat Supply	1 day?	2/1/21 8:00 AM	2/2/21 12:00 PM
7	Interface to Power Source	1 day?	2/1/21 8:00 AM	2/2/21 12:00 PM
8	<input checked="" type="checkbox"/> FCU Control Interface	1 day?	2/1/21 8:00 AM	2/2/21 12:00 PM
9	Establish Control Requirements	1 day?	2/1/21 8:00 AM	2/2/21 12:00 PM
10	Design Control Interface	1 day?	2/1/21 8:00 AM	2/2/21 12:00 PM
11	Prototype and test design	1 day?	2/1/21 8:00 AM	2/2/21 12:00 PM
12	Complete Design	1 day?	2/1/21 8:00 AM	2/2/21 12:00 PM
13	Implement and test design	1 day?	2/1/21 8:00 AM	2/2/21 12:00 PM
14	DC/DC converters	1 day?	2/1/21 8:00 AM	2/2/21 12:00 PM
15	FCU Monitoring Interface	1 day?	2/1/21 8:00 AM	2/2/21 12:00 PM
16	Integrate and Test	1 day?	2/1/21 8:00 AM	2/2/21 12:00 PM
17	Flight Control Unit	1 day?	2/1/21 8:00 AM	2/2/21 12:00 PM
18	Data Archive Unit	1 day?	2/1/21 8:00 AM	2/2/21 12:00 PM
19	Data Archive Disc	1 day?	2/1/21 8:00 AM	2/2/21 12:00 PM
20	Auxiliary Transmitter	1 day?	2/1/21 8:00 AM	2/2/21 12:00 PM
21	Mechanical Structure	1 day?	2/1/21 8:00 AM	2/2/21 12:00 PM
22	Thermal Control	1 day?	2/1/21 8:00 AM	2/2/21 12:00 PM
23	System Integration and Test	1 day?	2/1/21 8:00 AM	2/2/21 12:00 PM
24	Management	1 day?	2/1/21 8:00 AM	2/2/21 12:00 PM



Display the WBS code

- Right click on any of the column headers such as “Name”
- Select “Insert Column”
- Choose “WBS” from the “Field” dropdown and hit ok

	Name	Duration	S
1	Power System	1 day? 2/1/21 8:00	
2	Power Source	1 day? 2/1/21 8:00 AM	
3	FCU Supply	1 day? 2/1/21 8:00 AM	
4	DAU HD Supply	1 day? 2/1/21 8:00 AM	
5	DAU Supply	1 day? 2/1/21 8:00 AM	
6	CubeSat Supply	1 day? 2/1/21 8:00	
7	Interface to Power Source	1 day? 2/1/21 8:00 AM	
8	FCU Control Interface	1 day? 2/1/21 8:00	
9	Establish Control Requirements	1 day? 2/1/21 8:00 AM	

	Name	Duration	Start	Finish
1	Power System	1 day? 2/1/21 8:00 AM		2/2/21 12:00 PM
2	Power Source	1 day? 2/1/21 8:00 AM	2/1 8:00 AM	2/2/21 12:00 PM
3	FCU Supply	1 day? 2/1/21 8:00 AM	2/1 8:00 AM	2/2/21 12:00 PM
4	DAU HD Supply	1 day? 2/1/21 8:00 AM	2/1 8:00 AM	2/2/21 12:00 PM
5	DAU Supply	1 day? 2/1/21 8:00 AM	2/1 8:00 AM	2/2/21 12:00 PM
6	CubeSat Supply	1 day? 2/1/21 8:00 AM	2/1 8:00 AM	2/2/21 12:00 PM
7	Interface to Power Source	1 day? 2/1/21 8:00 AM	2/1 8:00 AM	2/2/21 12:00 PM
8	FCU Control Interface	1 day? 2/1/21 8:00 AM	2/1 8:00 AM	2/2/21 12:00 PM
9	Establish Control Requirements	1 day? 2/1/21 8:00 AM	2/1 8:00 AM	2/2/21 12:00 PM
10	Design Control Interface	1 day? 2/1/21 8:00 AM	2/1 8:00 AM	2/2/21 12:00 PM
11	Prototype and test design	1 day? 2/1/21 8:00 AM	2/1 8:00 AM	2/2/21 12:00 PM
12	Complete Design	1 day? 2/1/21 8:00 AM	2/1 8:00 AM	2/2/21 12:00 PM
13	Implement and test design	1 day? 2/1/21 8:00 AM	2/1 8:00 AM	2/2/21 12:00 PM
14	DC/DC converters	1 day? 2/1/21 8:00 AM	2/1 8:00 AM	2/2/21 12:00 PM
15	FCU Monitoring Interface	1 day? 2/1/21 8:00 AM	2/1 8:00 AM	2/2/21 12:00 PM
16	Integrate and Test	1 day? 2/1/21 8:00 AM	2/1 8:00 AM	2/2/21 12:00 PM
17	Flight Control Unit	1 day? 2/1/21 8:00 AM	2/1 8:00 AM	2/2/21 12:00 PM
18	Data Archive Unit	1 day? 2/1/21 8:00 AM	2/1 8:00 AM	2/2/21 12:00 PM
19	Data Archive Disc	1 day? 2/1/21 8:00 AM	2/1 8:00 AM	2/2/21 12:00 PM
20	Auxiliary Transmitter	1 day? 2/1/21 8:00 AM	2/1 8:00 AM	2/2/21 12:00 PM
21	Mechanical Structure	1 day? 2/1/21 8:00 AM	2/1 8:00 AM	2/2/21 12:00 PM



Entering the WBS code

- Any empty WBS column should now be visible
- You will have to manually enter the appropriate WBS code (1, 1.2, 1.2.1, etc.) for the tasks

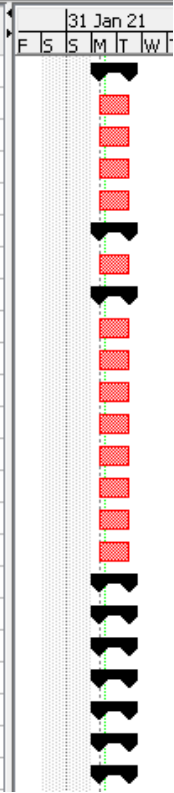
Views		Clipboard		Task		
ID	WBS	Name	Duration	Start	Finish	
1	1	<input type="checkbox"/> Power System	1 day?	2/1/21 8:00 AM	2/2/21 12:00 PM	
2	1.1	Power Source	1 day?	2/1/21 8:00 AM	2/2/21 12:00 PM	
3	1.2	FCU Supply	1 day?	2/1/21 8:00 AM	2/2/21 12:00 PM	
4	1.3	DAU HD Supply	1 day?	2/1/21 8:00 AM	2/2/21 12:00 PM	
5	1.4	DAU Supply	1 day?	2/1/21 8:00 AM	2/2/21 12:00 PM	
6	1.5	<input type="checkbox"/> CubeSat Supply	1 day?	2/1/21 8:00 AM	2/2/21 12:00 PM	
7	1.5.1	Interface to Power Source	1 day?	2/1/21 8:00 AM	2/2/21 12:00 PM	
8	1.5.2	<input type="checkbox"/> FCU Control Interface	1 day?	2/1/21 8:00 AM	2/2/21 12:00 PM	
9	1.5.2.1	Establish Control Requirements	1 day?	2/1/21 8:00 AM	2/2/21 12:00 PM	
10		Design Control Interface	1 day?	2/1/21 8:00 AM	2/2/21 12:00 PM	
11		Prototype and test design	1 day?	2/1/21 8:00 AM	2/2/21 12:00 PM	
12		Complete Design	1 day?	2/1/21 8:00 AM	2/2/21 12:00 PM	
13		Implement and test design	1 day?	2/1/21 8:00 AM	2/2/21 12:00 PM	
14		DC/DC converters	1 day?	2/1/21 8:00 AM	2/2/21 12:00 PM	
15		FCU Monitoring Interface	1 day?	2/1/21 8:00 AM	2/2/21 12:00 PM	
16		Integrate and Test	1 day?	2/1/21 8:00 AM	2/2/21 12:00 PM	
17		Flight Control Unit	1 day?	2/1/21 8:00 AM	2/2/21 12:00 PM	
18		Data Archive Unit	1 day?	2/1/21 8:00 AM	2/2/21 12:00 PM	
19		Data Archive Disc	1 day?	2/1/21 8:00 AM	2/2/21 12:00 PM	
20		Auxiliary Transmitter	1 day?	2/1/21 8:00 AM	2/2/21 12:00 PM	
21		Mechanical Structure	1 day?	2/1/21 8:00 AM	2/2/21 12:00 PM	
22		Thermal Control	1 day?	2/1/21 8:00 AM	2/2/21 12:00 PM	
23		System Integration and Test	1 day?	2/1/21 8:00 AM	2/2/21 12:00 PM	
24		Management	1 day?	2/1/21 8:00 AM	2/2/21 12:00 PM	



Task bars

- With all subunits inserted the lowest level will be red rectangles and higher levels will be black bars with points on the ends.

Views		Clipboard		Task		
	WBS	Name	Duration	Start	Finish	
1	1	<input type="checkbox"/> Power System	1 day?	2/1/21 8:00 AM	2/2/21 12:00 PM	
2	1.1	Power Source	1 day?	2/1/21 8:00 AM	2/2/21 12:00 PM	
3	1.2	FCU Supply	1 day?	2/1/21 8:00 AM	2/2/21 12:00 PM	
4	1.3	DAU HD Supply	1 day?	2/1/21 8:00 AM	2/2/21 12:00 PM	
5	1.4	DAU Supply	1 day?	2/1/21 8:00 AM	2/2/21 12:00 PM	
6	1.5	<input type="checkbox"/> CubeSat Supply	1 day?	2/1/21 8:00 AM	2/2/21 12:00 PM	
7	1.5.1	Interface to Power Source	1 day?	2/1/21 8:00 AM	2/2/21 12:00 PM	
8	1.5.2	<input type="checkbox"/> FCU Control Interface	1 day?	2/1/21 8:00 AM	2/2/21 12:00 PM	
9	1.5.2.1	Establish Control Requirements	1 day?	2/1/21 8:00 AM	2/2/21 12:00 PM	
10	1.5.2.2	Design Control Interface	1 day?	2/1/21 8:00 AM	2/2/21 12:00 PM	
11	1.5.2.3	Prototype and test design	1 day?	2/1/21 8:00 AM	2/2/21 12:00 PM	
12	1.5.2.4	Complete Design	1 day?	2/1/21 8:00 AM	2/2/21 12:00 PM	
13	1.5.2.5	Implement and test design	1 day?	2/1/21 8:00 AM	2/2/21 12:00 PM	
14	1.5.3	DC/DC converters	1 day?	2/1/21 8:00 AM	2/2/21 12:00 PM	
15	1.5.4	FCU Monitoring Interface	1 day?	2/1/21 8:00 AM	2/2/21 12:00 PM	
16	1.6	Integrate and Test	1 day?	2/1/21 8:00 AM	2/2/21 12:00 PM	
17	2	<input checked="" type="checkbox"/> Flight Control Unit	1 day?	2/1/21 8:00 AM	2/2/21 12:00 PM	
19	3	<input checked="" type="checkbox"/> Data Archive Unit	1 day?	2/1/21 8:00 AM	2/2/21 12:00 PM	
21	4	<input checked="" type="checkbox"/> Data Archive Disc	1 day?	2/1/21 8:00 AM	2/2/21 12:00 PM	
23	5	<input checked="" type="checkbox"/> Auxiliary Transmitter	1 day?	2/1/21 8:00 AM	2/2/21 12:00 PM	
25	6	<input checked="" type="checkbox"/> Mechanical Structure	1 day?	2/1/21 8:00 AM	2/2/21 12:00 PM	
27	7	<input checked="" type="checkbox"/> Thermal Control	1 day?	2/1/21 8:00 AM	2/2/21 12:00 PM	
29	9	<input checked="" type="checkbox"/> System Integration and	1 day?	2/1/21 8:00 AM	2/2/21 12:00 PM	





Set the task durations

- Now enter the time associated with each task in the “Duration” field.
- Set durations for the lowest level tasks and the total time will be summarized or rolled-up to the next highest level.

Views		Clipboard		Task								
	WBS	Name	Duration	Start	Finish	Mon 1 Feb	Tue 2 Feb	Wed 3 Feb	Thu 4 Feb	Fri 5 Feb	Sat 6 Feb	Sun 7 Feb
1	1	Power System	10 days	2/1/21 8:00 AM	2/12/21 12:00 PM							
2	1.1	Power Source	5 days	2/1/21 8:00 AM	2/5/21 12:00 PM							
4	1.2	FCU Supply	10 days	2/1/21 8:00 AM	2/12/21 12:00 PM							
6	1.3	DAU HD Supply	5 days	2/1/21 8:00 AM	2/5/21 12:00 PM							
8	1.4	DAU Supply	10 days	2/1/21 8:00 AM	2/12/21 12:00 PM							
10	1.5	CubeSat Supply	4 days	2/1/21 8:00 AM	2/4/21 12:00 PM							
11	1.5.1	Interface to Power S	2 days	2/1/21 8:00 AM	2/2/21 12:00 PM							
13	1.5.2	FCU Control Interface	4 days	2/1/21 8:00 AM	2/4/21 12:00 PM							
14	1.5.2.1	Establish Control Requi	1 day	2/1/21 8:00 AM	2/1/21 12:00 PM							
15	1.5.2.2	Design Control Interfac	2 days	2/1/21 8:00 AM	2/2/21 12:00 PM							
16	1.5.2.3	Prototype and test des	4 days	2/1/21 8:00 AM	2/4/21 12:00 PM							
17	1.5.2.4	Complete Design	1 day	2/1/21 8:00 AM	2/1/21 12:00 PM							
18	1.5.2.5	Implement and test des	2 days	2/1/21 8:00 AM	2/2/21 12:00 PM							
19	1.5.3	DC/DC converters	3 days	2/1/21 8:00 AM	2/3/21 12:00 PM							
21	1.5.4	FCU Monitoring Interf	3 days	2/1/21 8:00 AM	2/3/21 12:00 PM							
23	1.6	Integrate and Test	3 days	2/1/21 8:00 AM	2/3/21 12:00 PM							
25	2	Flight Control Unit	10 days	2/1/21 8:00 AM	2/12/21 12:00 PM							
27	3	Data Archive Unit	10 days	2/1/21 8:00 AM	2/12/21 12:00 PM							
29	4	Data Archive Disc	3 days	2/1/21 8:00 AM	2/3/21 12:00 PM							
31	5	Auxiliary Transmitter	5 days	2/1/21 8:00 AM	2/5/21 12:00 PM							
33	6	Mechanical Structure	10 days	2/1/21 8:00 AM	2/12/21 12:00 PM							
35	7	Thermal Control	5 days	2/1/21 8:00 AM	2/5/21 12:00 PM							
37	9	System Integration and	50 days	2/1/21 8:00 AM	4/9/21 12:00 PM							



Set the task durations (2)

- Smaller time units such as hours can be set but duration will always be displayed in decimal days
- Durations can also be set by double clicking on a task and changing either the “duration” (displayed in days) or “work” (displayed in hours) under the general tab.

Note: Here we can see that our 8 hours of work will take 2 days, as per our 4 hour daily schedule

Task Information - 18

General Predecessors Successors Resources Advanced Notes

Name: Implement and test design

Duration: 2 days Estimated

Percent Complete: 0% Priority: 500

Cost: \$0.00 Work: 8 hours

Dates

Start: 2/1/21 8:00 AM Finish: 2/2/21 12:00 PM

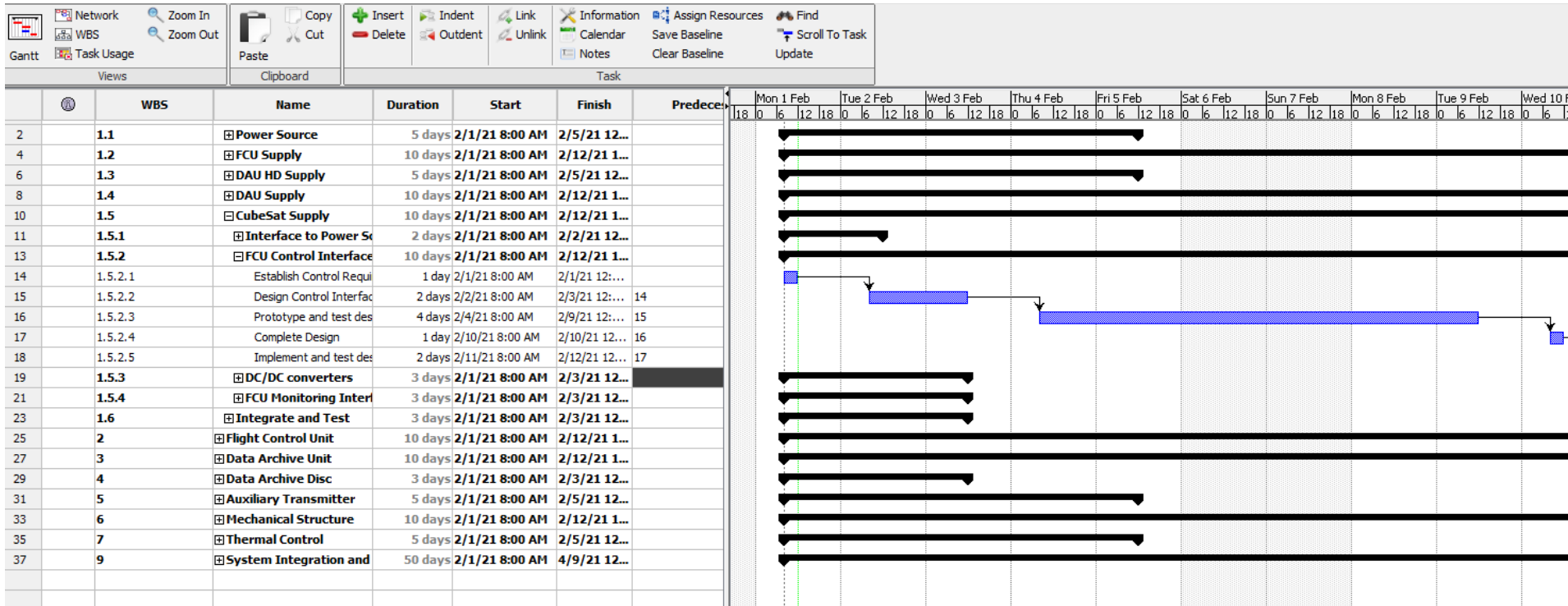
Baseline Start: Baseline Finish:

Close Help



Set the task predecessors

- Enter the task dependence (i.e. which tasks must be complete prior to starting the next task) in the “Predecessors” field.
- You need to use the row number, not the WBS code.





Set the timescale of the chart

- Changing timescale of the chart is accomplished via zooming in and out with the appropriate buttons

Project Libre
LaACES Sample Project *

	WBS	Name	Duration	Start
2	1.1	Power Source	5 days	2/1/21 8:0
4	1.2	FCU Supply	10 days	2/1/21 8:0
6	1.3	DAU HD Supply	5 days	2/1/21 8:0
8	1.4	DAU Supply	10 days	2/1/21 8:0



Make an image for documents

- Unfortunately, ProjectLibre does not have export option
- The best option seems to be adjust the Gantt chart and task list windows until they display what you want to show
- Then either take a screenshot and crop and example is shown below

