

Team PLEASE

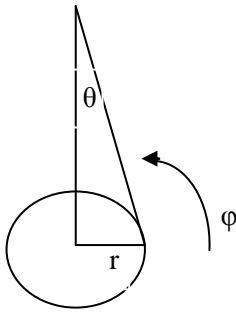
November Status Report

HASP

### **Activities of the Team:**

This month we were able to integrate the data from our tiltmeter and correct our centroid calculation algorithm for the tilt in the x and y axis during flight. I was able to run this for all of the flight data. Among the information gathered while running the algorithm I obtained the  $B_x$  and  $B_y$  of each picture as well as the  $\tan B_x$  and  $\tan B_y$ .  $B_x$  and  $B_y$  represent the angles from x and y axes of the corrected centroid.

I also found the  $\theta$ , and  $\phi$  for each image using the corrected centroid calculation.



The next goal is to check the precision of my calculations using a best fit line and finding the  $X^2$ .

### **Problems Encountered:**

No significant problems encountered this month.

### **Milestones Achieved:**

Ran centroid location and correction for all images taken during HASP Flight.

### **Current Team Members and Demographics:**

Team Leader: Ryan Gueho

Faculty Advisor: Michael Cherry

With Guidance From: Michael Stewart, Gregory Guzik, Ching-Cheng Hsu, Michael Cherry, and Nick Cannady